

# MODEL TB & TD

(Cast Aluminum Propeller)

*Romlair Model TB & TD Tube Axial Inline Fans – Belt and direct driven tube axial propeller fans designed and built for industrial and commercial applications. Can be used with supply or exhaust ducting, or both.*

## CONSTRUCTION FEATURES

- **Cast Aluminum Airfoil Propeller** – Special heavy duty cast aluminum non-sparking propeller. These propellers are easily removed with the use of taper lock bushings.
- **Heavy Gauge Steel Housing** - Heavy gauge steel housing with steel angle end flange rings for superior strength. Rings contain mounting holes for securing fan to ducting.
- **Motors** – Heavy duty totally enclosed fan cooled (TEFC) or explosion proof ball bearing motors for years of trouble free operation. Open drip proof, TEFC, or explosion proof available for belt driven fans.
- **Variable Pitch Drives To 7-1/2 Hp** – Adjustable for final systems RPM. Belts sized for 165% of driven Hp.
- **Self-Aligning Pillow Block Bearings** – Selected with a basic rating fatigue life (L10) in excess of 80,000 hours at each fan's maximum operating speed when mounted in a horizontal configuration. Extended lubrication lines are standard on the Model TB.
- **Adjustable Motor Base** – An adjustable motor base is provided for tightening the fan belts.
- **UL Listing** – UL705 listing is available on TEFC models up to 10 Hp.

# Tube Axial Inline Fans



### MODEL TD – DIRECT DRIVE TUBE AXIAL FAN

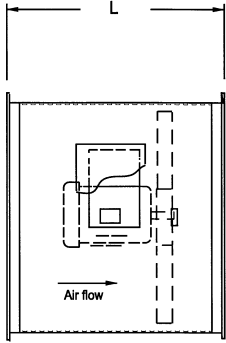
Romlair Model “TD” direct drive tube axial fans should be used where ever the air being handled is relatively clean or where temperatures do not exceed the operating limitations of the motor. Motors supplied are totally enclosed.



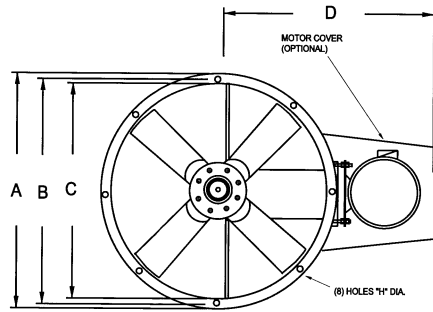
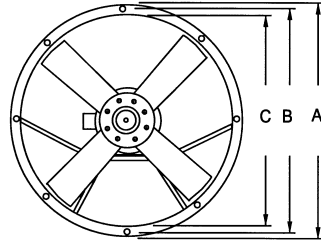
### MODEL TB – BELT DRIVE TUBE AXIAL FAN

The Romlair Model “TB” belt driven tube axial fans are designed for use where the fan motor must be kept out of the direct air stream. Belt drive models are suitable for use in the presence of corrosive, dust, and grease laden atmospheres. Belts and bearings are enclosed in an air insulated housing which protect them from contamination, keeps them cool and prolongs service life under severe operating conditions.

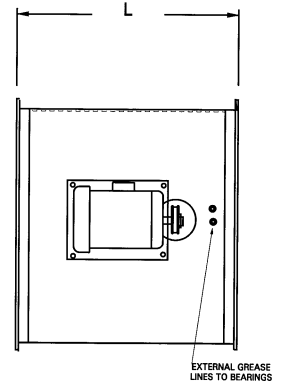
**MODEL TD & TB DRAWINGS** **DIMENSIONAL DATA**



**DIRECT DRIVE**



**BELT DRIVE**



DIMENSIONS															
SIZE	A	B	C	D	L	H	GA	SIZE	A	B	C	D	L	H	GA
24	27-3/16	25-7/8	24	26	22	7/16	12	48	52-3/16	50-3/8	48	40-1/2	36	7/16	10
30	34-3/16	32-3/8	30	29.25	24	7/16	12	54	58-3/16	56-3/8	54	47-1/4	37-1/2	7/16	10
36	40-3/16	38-3/8	36	33.75	26	7/16	12	60	64-3/16	62-3/8	60	50-3/4	40	7/16	10
42	46-3/16	44-3/8	42	37.25	32	7/16	10								

**MODEL TD DIRECT DRIVE** **PERFORMANCE DATA**

MODEL	HP	RPM	MAX BHP	dBA	STATIC PRESSURE / CAPACITY								
					0	.125	.25	.375	.50	.625	.50	1.0	
TD-242-8	1/3	860	0.35	66	6206	5413	3961	2350	905				
TD-243-11	1/2	1160	0.60	74	7061	6478	5817	5030	3714	2208	1535		
TD-244-11	3/4	1160	0.85	77	8264	7672	6992	5939	4703	3478	2341		
TD-245-11	1	1160	1.15	78	8938	8391	7844	6970	5877	4714	3596		
TD-246-17	1-1/2	1725	1.70	84	10074	9714	9357	8981	8544	8107	7667	6136	
TD-247-17	2	1725	2.33	86	11201	10788	10374	9947	9457	8923	8365	6873	
TD-303-8	1/2	860	0.56	70	9784	8712	7443	5178	3086	1652			
TD-304-8	3/4	860	0.88	72	11066	9917	8311	6035	3879	1826			
TD-305-8	1	860	1.15	80	12252	11196	9782	7847	5458	3385	1602		
TD-305-11	1	1160	1.16	80	11875	11036	10169	9152	7978	6318	4393	2081	
TD-306-11	1-1/2	1160	1.71	81	13912	13013	12045	10897	9517	7772	6076	2907	
TD-307-11	2	1160	2.31	82	15070	14211	13352	12067	10637	8706	6802	3298	
TD-308-11	3	1725	3.48	86	15858	15356	14853	14342	13614	12886	12160	10835	
TD-309-11	5	1725	5.65	89	20397	19822	19247	18672	18096	17520	16884	15337	
TD-364-8	3/4	860	0.85	75	13324	12050	10685	9113	6920	4641	2722		
TD-365-8	1	860	1.12	76	14808	13486	12102	10308	8068	5558	3494		
TD-366-8	1-1/2	860	1.73	78.0	16977	15761	14360	12440	9841	7117	4767		
TD-367-11	2	1160	2.27	85	18671	17623	16592	15493	14189	12615	10850	6916	
TD-368-11	3	1160	3.27	86	21775	20826	19878	18863	17332	15861	14025	9560	
TD-425-8	1	860	1.12	78	18725	16873	14615	11818	8626	4196	1573		
TD-426-8	1-1/2	860	1.66	79	21965	20132	17901	15335	12341	7853	3822		
TD-427-8	2	860	2.24	81	23512	21684	19454	16968	13943	10047	4947		
TD-428-8	3	860	3.22	82	27040	25270	23209	20805	18490	14631	10880	2974	
TD-428-11	3	1160	3.12	86	26328	25011	23694	22149	20459	18474	16478	11802	
TD-429-11	5	1160	5.59	89.0	31988	30644	29299	27774	25912	24086	22273	17433	
TD-4210-11	7-1/2	1160	8.07	91	36654	35349	34043	32729	30851	29016	27429	23214	
TD-487-8	2	860	2.24	84	24776	23339	21678	19954	18312	16456	14030	7809	
TD-488-8	3	860	3.52	85	30631	29205	27505	25759	24058	22280	20093	13517	
TD-489-8	5	860	5.66	87	36665	35325	33892	32343	30606	28869	26211	18797	

**MODEL TB BELT DRIVE**
**PERFORMANCE DATA**

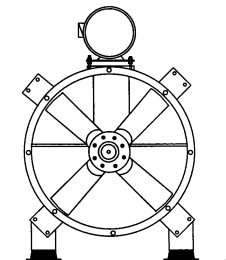
MODEL	HP	RPM	MAX BHP	*dBA	STATIC PRESSURE / CAPACITY								
					0	.125	.25	.375	.50	.625	.50	1.0	
TB-243	1/2	1260	0.52	71.6	6280	5736	5043	4338					
TB-244	3/4	1445	0.79	74.1	7214	6730	6165	5557	4933				
TB-245	1	1595	1.06	75.8	7962	7525	7044	6496	5941	5353			
TB-246	1-1/2	1820	1.57	78.1	9086	8702	8318	7848	7638	6881	6392	5154	
TB-247	2	2005	2.11	79.7	10009	9661	9313	8924	8489	8053	7610	6671	
TB-248	3	2295	3.16	82.1	11457	11153	10848	10544	10189	9808	9428	8657	
TB-303	1/2	870	0.56	71.7	8907	7754	6366	4104					
TB-304	3/4	995	0.85	74	10186	9203	8112	6761	4523				
TB-305	1	1095	1.13	75.7	11210	10317	9346	8219	6703	4749			
TB-306	1-1/2	1255	1.7	78.1	12848	12069	11255	10389	9357	8136	6353		
TB-307	2	1360	2.16	79.5	13923	13204	12475	11676	10830	9840	8606		
TB-308	3	1560	3.26	81.8	15971	15344	14717	14053	13357	12649	11786	9720	
TB-309	5	1810	5.09	84.4	18530	17990	17449	16909	16328	15728	15128	13733	
TB-365	1	855	1.11	76.9	14430	13067	11380	9108	6538				
TB-366	1-1/2	975	1.64	79.2	16459	15261	13872	12215	10186	7915			
TB-367	2	1075	2.15	80.9	18063	16979	15778	14422	12690	10809	8732		
TB-368	3	1214	3.18	83.0	20494	19531	18569	17393	16197	14641	13011	9401	
TB-369	5	1435	5.26	85.9	24224	23410	22596	21765	20753	19742	18665	15908	
TB-3610	7-1/2	1642	7.56	88.3	27347	26626	25905	25184	24412	23516	22620	20640	
TB-426	1-1/2	730	1.47	75.7	17999	16370	14555	12442					
TB-427	2	810	2	77.5	19972	18510	16918	15177	13009				
TB-428	3	930	3.04	79.9	22930	21658	20323	18911	17354	15555			
TB-429	5	1105	5.11	82.9	27245	26174	25103	23937	22749	21478	20152	16688	
TB-4210	7-1/2	1260	7.56	85.2	31067	30128	29188	28234	27192	26149	25073	22747	
TB-487	2	651	2.08	78.0	23947	21916	19598	16959					
TB-488	3	746	3.13	80.4	27442	25673	23730	21612	19246				
TB-489	5	886	5.23	83.4	32592	31103	29577	27880	26109	24203	21921		
TB-4810	7-1/2	1015	7.87	85.7	37337	36037	34737	33328	31846	30326	28662	24826	
TB-4811	10	1118	10.46	87.4	41126	39946	38766	37570	36225	34880	33504	30482	
TB-548	3	595	3.15	75.8	33635	31107	27709	23082					
TB-549	5	708	5.3	78.8	40023	37898	35347	32317	28429				
TB-5410	7-1/2	815	8.06	83.2	46071	44226	42302	39821	37118	33740			
TB-5411	10	895	10.68	86.1	50594	48913	47223	45125	42866	37144			
TB-609	5	620	5.24	80.3	46690	43785	40133	35494	29539				
TB-6010	7-1/2	704	7.65	83.1	53016	50457	47431	43849	39610	34366			
TB-6011	10	793	10.96	85.3	59718	57447	54963	52108	48690	44969	40313		

Romlair Co. certifies that the fans shown have been tested and rated in accordance with AMCA Bulletin 211 and are guaranteed by the manufacturer to deliver rated performance

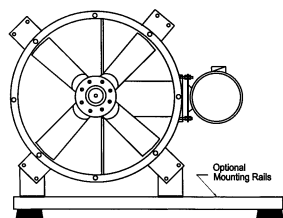
\*dBA shown apply to the highest cataloged CFM at each fan RPM. Rating based on a distance of 5'.

### OPTIONAL MOUNTING ARRANGEMENTS

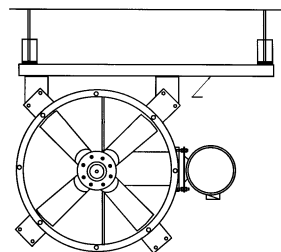
Romlair tube axial fans can be mounted as shown in the various mounting configurations. To facilitate installation, mounting brackets can be welded on each fan. These brackets coupled with standard mounting supports provide a complete mounting system. Optional mounting rails are required in mounting arrangements 2, 3 & 5.



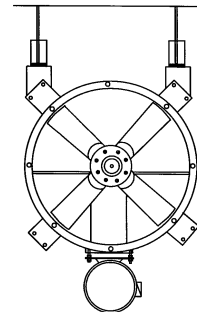
Horizontal Base Mount  
Fig. 1



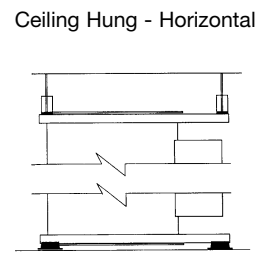
Horizontal Base Mount  
Motor at 3 or 9 O'clock  
Position. Fig. 2



Ceiling Hung - Horizontal  
Motor at 3 or 9 O'clock  
Position. Fig. 3



Ceiling Hung - Horizontal  
Fig. 4



Base Mount - Vertical  
Fig. 5

## TUBE AXIAL FAN ACCESSORIES

- **BELT GUARD** – Belt guards covering the motor sheave and belts outside the fan are mounted directly to the fan housing.
- **MOTOR COVER** – Weatherproof motor cover protects the motor and drive components.
- **ACCESS DOOR** – Bolted access door for inspection and cleaning of the propeller, bearings, and drives.
- **INLET AND OUTLET GUARDS** – Removable safety guards provide protection in ducted or non-ducted installations.
- **COMPANION FLANGES** – Companion angle rings with prepunched holes are available on all fan sizes.
- **SPECIAL COATINGS** – Special liquid coatings are available, including special color to match enamels, epoxies, and urethanes. Urethane powder coatings are available. Consult factory for information regarding which coating to use.
- **VIBRATION ISOLATORS** – Base mount or hanging isolators are available. The vibration isolators are provided in sets of four and are available in either neoprene or spring mounts.
- **MOUNTING BRACKETS** – As illustrated on page 3 of this bulletin, mounting brackets can be provided to position the fan horizontally or vertically for both floor and ceiling applications.

## SPECIFICATIONS

Furnish and install as indicated on the plans Romla Ventilator Company, San Diego California. Fans shall be belt (or direct) driven and incorporate a cast aluminum nonsparking airfoil propeller. Fan shall be heavy gauge galvanized steel with continuously welded seams and welded and flange rings. Fan bearings shall be factory pre-lubricated self aligning pillow block type with extended bearing lubrication lines. Drives shall be designed for 165% of rated horsepower. Belted motor drives to 7-1/2 Hp shall be variable pitch. Belts shall be oil resistant non static. Belt driven fans shall have belts mounted in a tube to keep belts, bearings and driven sheave from exposure to grease, high heat, etc. Optional accessories shall include factory disconnect switches, gravity or motorized dampers, protective coatings, open drip proof, TEFC and explosion proof motors, belt guards, stack caps, mounting bases, motor covers, and companion flanges.

## WARRANTIES

The Romla Ventilator Company warrants this equipment to be free from defects in material and workmanship under normal use and service for a period of one year from date of delivery. During the warranty period if any parts prove to be defective, they will be repaired or replaced free of charge at factory option: If upon receipt of written authorization they are delivered prepaid to the factory. This guarantee does not cover any damage caused by neglect of lubrication, accident or overload, improper installation, nor does it cover the cost of repairs made or attempted outside the factory, without authorization from Romla Ventilator Company. Electric motors are guaranteed only to the extent of the motor manufacturer's warranty. Romla Ventilator Company is not responsible for the cost of removal of the defective product or part, or the installation of the repaired or replaced products or part. Correction of any verified defects by repair or replacement shall constitute fulfillment of this warranty.



**WARNING! DO NOT USE IN HAZARDOUS ENVIRONMENTS** where fans electrical system could provide ignition to combustible or flammable materials, unless unit is specifically built for hazardous environments. Guards must be installed when fan is within reach of personnel or within seven (7) feet of working level or when deemed advisable for safety.



**ROMLA VENTILATOR COMPANY**  
 9668 Heinrich Hertz Drive, Unit D  
 San Diego, California 92154  
 619/946-1224 • Fax 619/946-1227 • [www.romlair.com](http://www.romlair.com)

## DISTRIBUTED BY

